

CCS steel  
the real steel

REBAR  
for customised grids and baskets



[www.ccs-steel.be](http://www.ccs-steel.be)

## Your reliable partner for grids and baskets with short delivery times at competitive prices.

### What do we do?

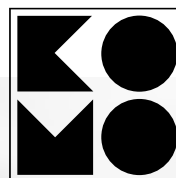
CCS Steel is your manufacturer for custom construction steel mats. We have been active on the Belgian market since the end of 2019. Our fully automatic grid welding machine guarantees consistent quality. Flat, curved, round construction steel mats and baskets are among our products – all customised to meet project specifications.

### Different market segments

Our clients come mainly from the following market segments: precast concrete (retaining walls, trench silo walls, cisterns and precast basements), swimming pools, cellar builders, civil and hydraulic engineering, roads & infrastructure.

### BENOR & KOMO certified

All our products are manufactured according to EU quality standards. We constantly monitor quality and check our finished products daily for dimensional stability, durability and finish.



# Our products

---

## Our range includes top-quality. top-strength products.



### Flat customised grids

Ø 6, 8, 10, 12, 14 and 16  
Maximum width 3950 mm  
Maximum length 9200 mm  
Longitudinal & cross bars possible in different diameters  
(Round) grids with cut-outs  
Grids with slanted sides  
One-way grids

### Preformed customised grids

Ø 6, 8, 10, 12, 14 and 16  
Maximum width 3950 mm  
Maximum length 9200 mm including bends  
Longitudinal & cross bars possible in different diameters  
Starter bar reinforcement for walls  
Edge pins  
Possibility of 180° bends



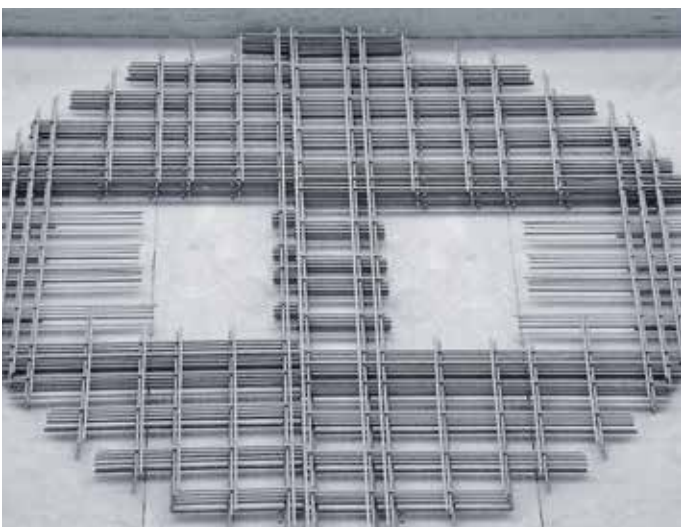
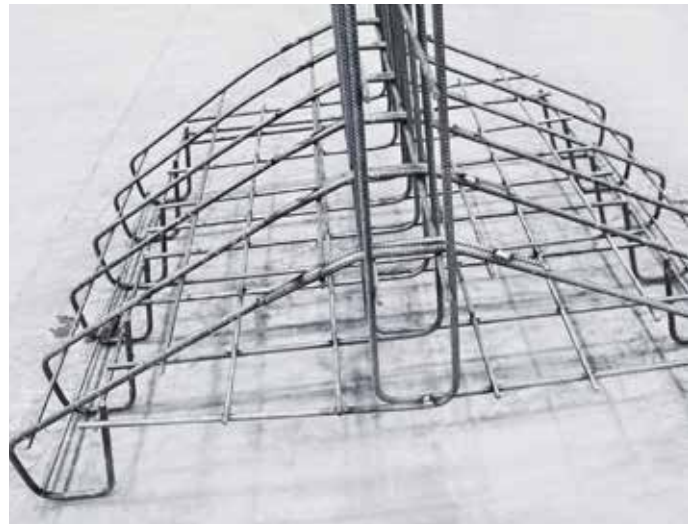
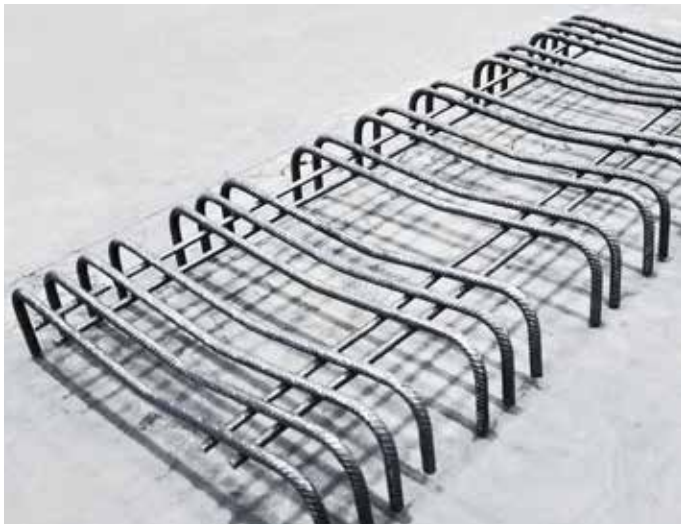
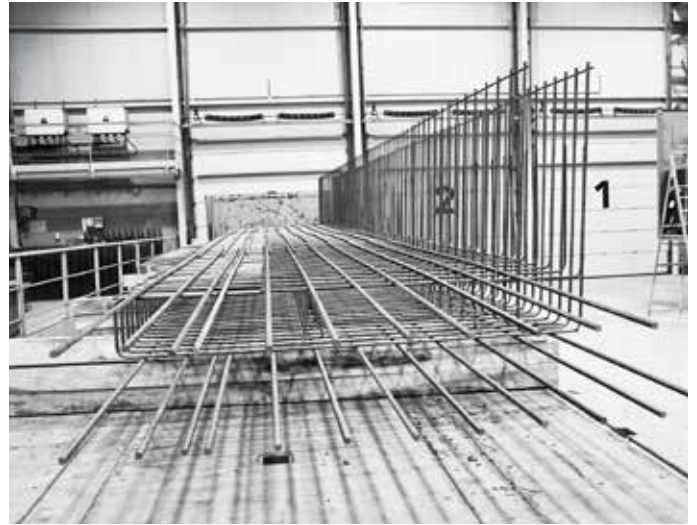
### Baskets

Ø 6, 8, 10, 12, 14 and 16  
Maximum width 3950 mm  
Maximum length 9200 mm including bends  
Longitudinal & cross bars possible in different diameters  
Distance bar after bending depending on diameters  
Foundation beams  
Columns



# Completed projects

---



Do you have any questions about flat or bent customised grids or baskets?  
If so, please feel free to contact us!

CCS Steel

Hooimeersstraat 17a, B-8710 Wielsbeke - [info@ccs-steel.be](mailto:info@ccs-steel.be) - [www.ccs-steel.be](http://www.ccs-steel.be) - Tel.+32 56 13 00 13